

# A message from **QUEENSLAND FIRE AND RESCUE SERVICE**



**IS YOUR SMOKE ALARM A PHOTOELECTRIC TYPE?**

**For early warning and less nuisance alarms,  
replace your smoke alarm with a photoelectric type.**

**SAVING SECONDS SAVES LIVES.**



**Toward**   
Tomorrow's Queensland



More Information Over...

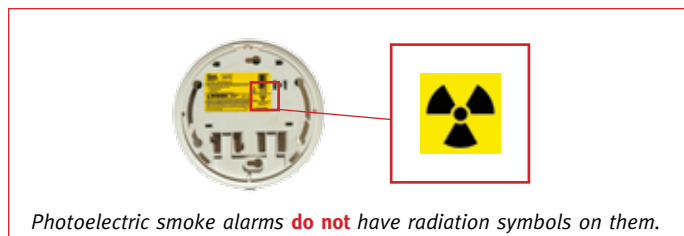
## PHOTOELECTRIC IS A TYPE OF SMOKE ALARM, NOT A BRAND.

- ✓ They give earlier warning of slow burning and smouldering fires, which happen most when people are asleep.
- ✓ Because of the earlier warning, there is more time to escape.
- ✓ They are also good at detecting other kinds of fires.
- ✓ Battery powered photoelectric smoke alarms can be installed by anyone with home handy person skills.

## WHAT KIND OF SMOKE ALARMS DO I HAVE?

Photoelectric smoke alarms look like other alarms, but they **do not** have a radiation symbol on them.

If yours has a radiation symbol on it, it should be replaced.



## WHAT DO I DO NOW?

Ideally, change your smoke alarm to a photoelectric smoke alarm.

You can buy them from hardware stores, electrical retailers, and through your electrician.

Look for the word 'photoelectric' on the unit or the packaging.

**For a few dollars more, you'll get greater peace-of-mind.**

## SMOKE ALARMS ARE LAW

Every home must have at least one smoke alarm.

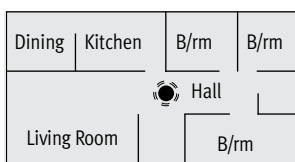
Smoke alarms are powered by either your home's 240 volt power supply or a 9 volt battery.

Homes built from 1997 onwards must have 240 volt smoke alarms. They must also have battery back-up.

Homes built before 1997 must have at least one 9 volt battery powered smoke alarm on each level.

**WHERE DO THEY NEED TO GO?** At least one smoke alarm must be located between bedrooms and the most likely escape path on each level of the home.

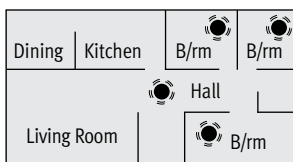
### Basic protection floor plan



Between the bedrooms and the rest of the house. **Minimum by law.**

### Better protection floor plan

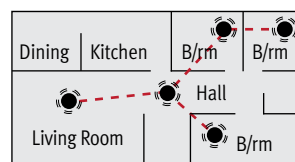
*Additional recommendation for added safety (not law)*



Inside the bedrooms if you are a heavy sleeper, or if you close the door.

### Best protection floor plan

*Additional recommendation for added safety (not law)*



Inside each bedroom, in the hallway and living areas, and connected together.

## HOW LONG DOES A SMOKE ALARM LAST?

Smoke alarms generally have a limited life of no more than 10 years. If an expiry date is not visible on the alarm, it is probably nearing 10 years old and should be replaced.

## WHAT IF MINE IS WIRED IN?

Only a licensed electrician can replace your 240 volt smoke alarm and it must be replaced with a 240 volt smoke alarm.

If your 240 Volt smoke alarm is relatively new but not photoelectric, and you want better protection without the immediate cost of replacement, add a battery powered photoelectric smoke alarm beside your existing smoke alarm.

For more information or advice phone **1300 369 003**, or go to **www.fire.qld.gov.au**